



**Sonarika Equipments**  
*A Solution for clean room and lab furniture*







# INTRODUCTION

We would like to introduce our company Sonarika Equipments, manufacturing of clean room and lab furniture made in stainless steel and mild steel. All products are customized as per client's requirements.

We have been an established company with an excellent track record for the best customer satisfaction with no compromise on quality and services towards our customer. We provide a range of Products for pharma industry, Chemical lab, food industry, Colleges and other necessary Parts of equipments at best price.

Please feel free to get in touch with us about any of your clean room and lab furniture requirements. Brochure enclosed with all of our products and its details.

We are looking forward to a wonderful relationship together and success for all concerned.

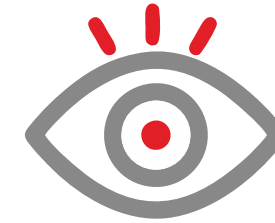


## OUR VISION

Our vision is to be a leading international furniture manufacturer offering innovative and superior quality products.

In providing the best value-for-money products accompanied by the best service in the industry, right from design to delivery.

---



## OUR MISSION

Our mission is to create Value for our customers through Reliability and Flexibility.

We will achieve our aims through implementing the following values

---



**08 - 09**

**CABINETS & LOCKERS**

**10 - 11**

**CROSS BENCH**

**12 - 13**

**STORAGE COMPACTOR  
MS CABINETS & LOCKERS**

**14 - 15**

**DIA PUNCH CABINET**

**16 - 17**

**ACCESSORIES**

**18 - 18**

**SAMPLER**

**19 - 19**

**SIEVES**

**20 - 20**

**SS TABLE**

**21 - 21**

**SS TROLLEY**

**22 - 22**

**LADDER**

**23 - 23**

**RAILING**

**24 - 24**

**PASS BOX**

**25 - 25**

**PACKING CONVEYOR BELT**

**26 - 29**

**LABORATORIES  
FURNITURE SETUP**

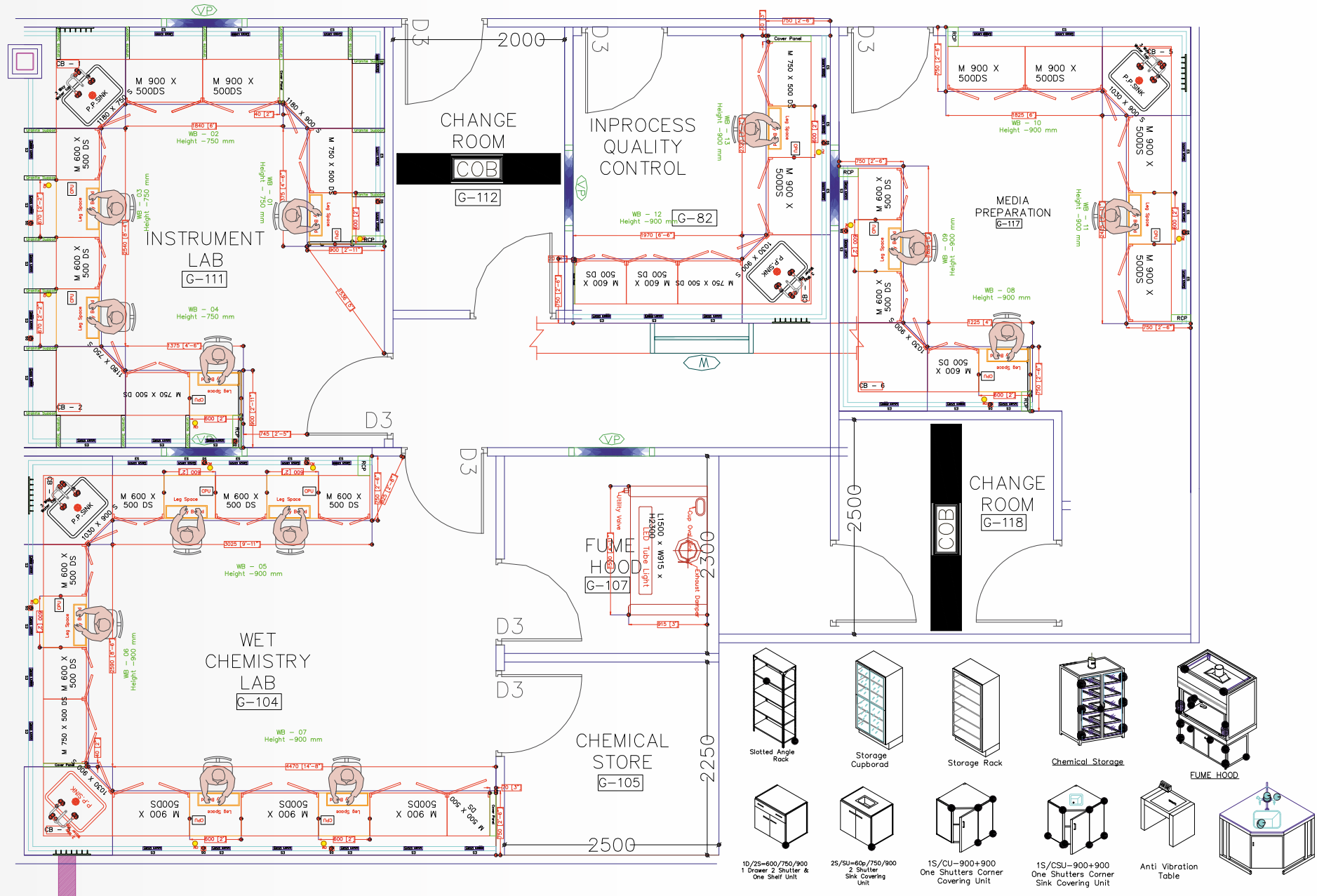
**30 - 30**

**RACK**

**31 - 31**

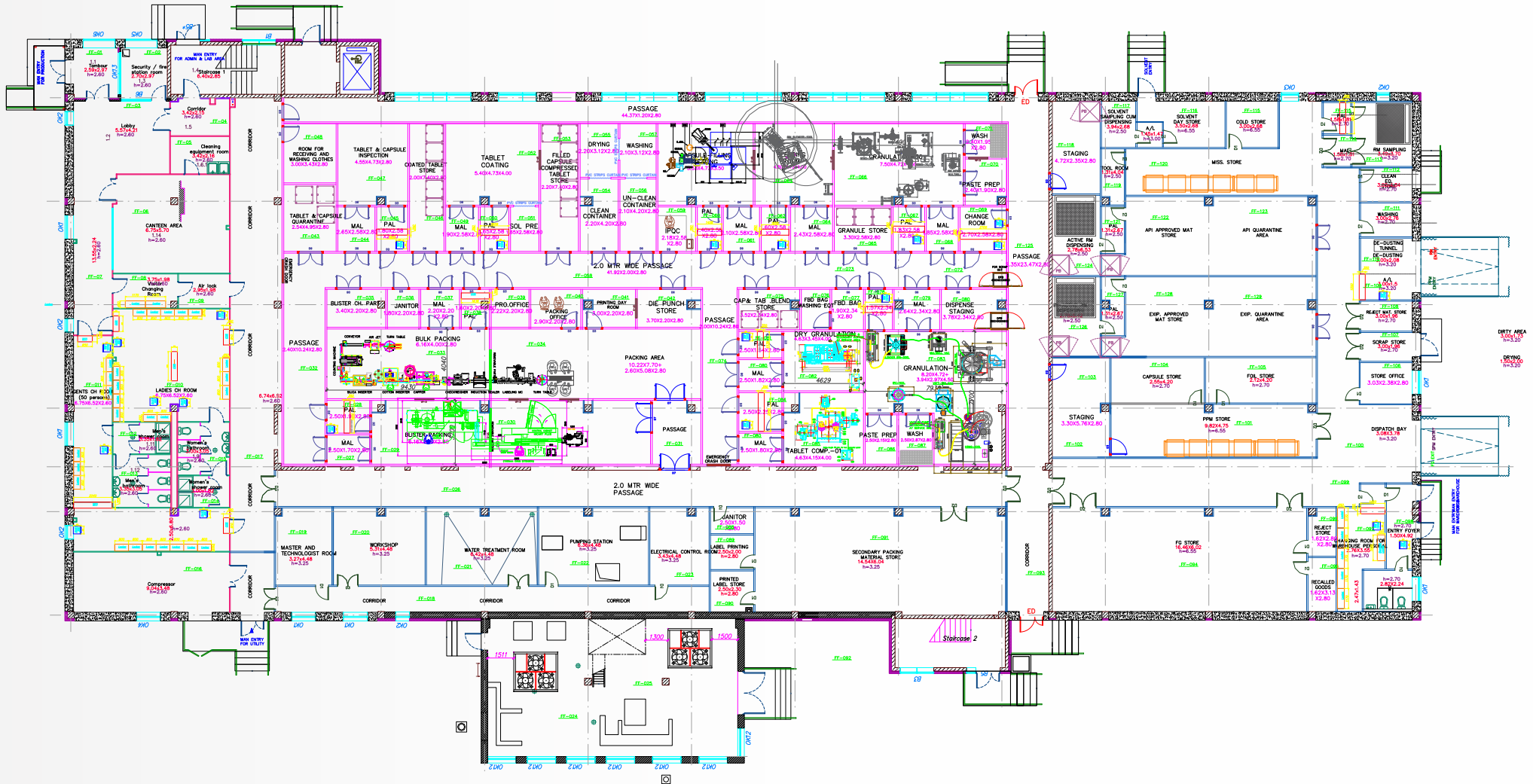
**BLOOD EQUIPMENTS  
ANCILLARIES**

# CONCEPTUAL LAYOUT





# CONCEPTUAL LAYOUT





## **SS 304/316 Material of Construction**

### **Made in 18/16 Gauge**

Stainless Steel Lockers are specially designed & fabricated for the use of Pharma Company. Entire Locker will be fabricated from SS 304 2B prime material quality, to get the better finish, entire welding work is done by Argon welding. It is highly used in pharmaceuticals Warehouse, Production area, Change Room, Airlocks. It has a smooth shiny metallic structure and appearance.

**Durability** Stainless steel does not dent, crack, break, or pit easily. This prevents from dirt and bacteria forming on our equipment. It can withstand abrasive materials & chemicals.

**Longevity** Because of its resistance to corrosion and rust, stainless steel equipment is known for its long-lasting functionality.

**Finish :** Matt/ Mirror Polish



# SS LOCKER & CABINETS



**SS 12 LOCKER**



**SS 36 LOCKER**



**SS APRON LOCKER WITH SELF**



**SS SHOE LOCKER**



**SS 15 LOCKER**



**SS APRON LOCKER**

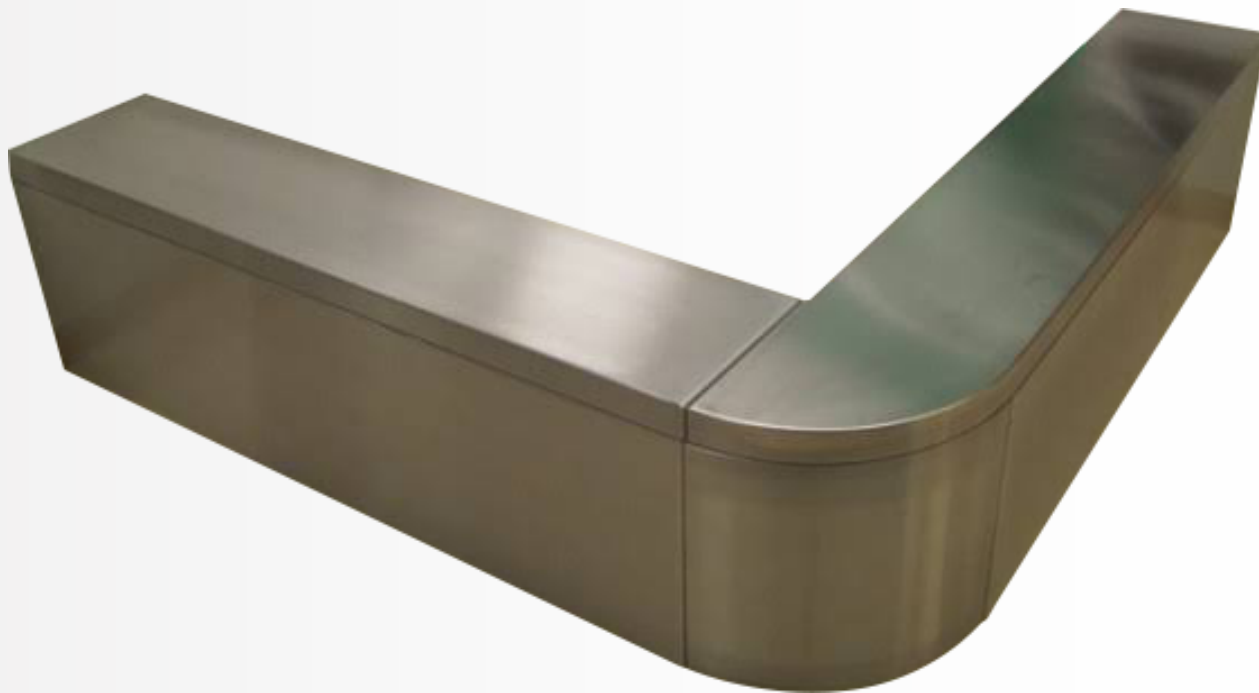


**SS STOREWELL CABINET**



**SS GLASS STOREWELL CABINET**

# CROSS BENCH



SS 304/316 Material Of Construction  
Made in 18/16 Gauge

Cross Over Bench is a divider & provides protection for staff entering from the Primary change room to the Secondary change room or from the Air Lock of the Production / Manufacturing Area, warehouse, dispensing, sampling & Packing area.

Durability Stainless steel does not dent, crack, break, or pit easily.

This prevents from dirt and bacteria forming on our equipment.

It can withstand abrasive materials & chemicals. Longevity Because of its resistance to corrosion and rust, stainless steel equipment is known for its long-lasting functionality.

Finish in Matt/Mirror Polish



# SS CROSS OVER BENCH



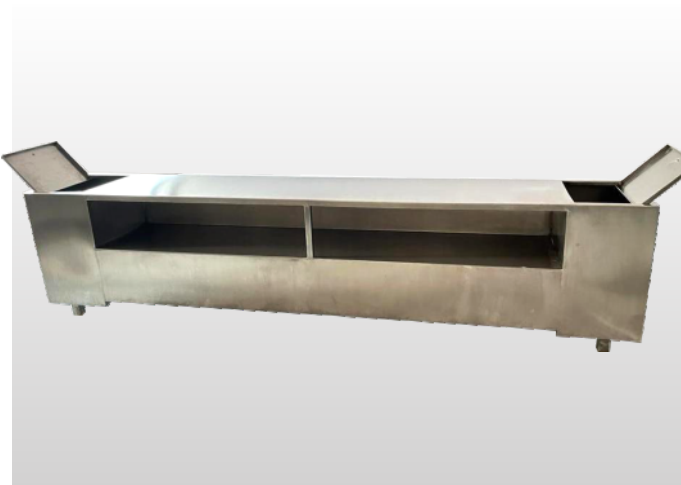
**CROSS OVER BENCH**



**CROSS OVER BENCH WITH BIN & FLAP**



**CROSS OVER BENCH WITH BIN**



**CROSS OVER BENCH WITH 2 SIDE COMPARTMENT**



**“S” TYPE CROSS OVER BENCH**

# STORAGE COMPACTORS



The MS File Cabinet is a cabinets for documentation storage purpose.

It is a piece of office furniture, School Furniture, Warehouse Furniture for storing paper documents, Staff Locker, Laptop Cabinet.

In the most simple context, it is an enclosure for drawers in which items are stored.

The two most common forms of filing cabinets are vertical files and lateral files.

As per the client requirements material Customised with powder coated Finish.

# MS LOCKER & CABINETS



**STOREWELL CABINET**



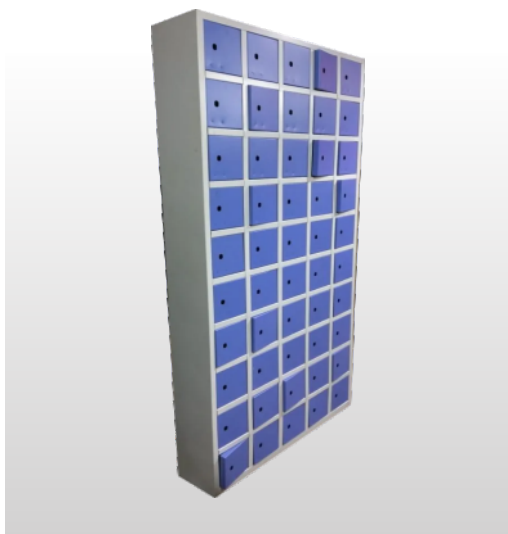
**FILING DRAWER CABINET**



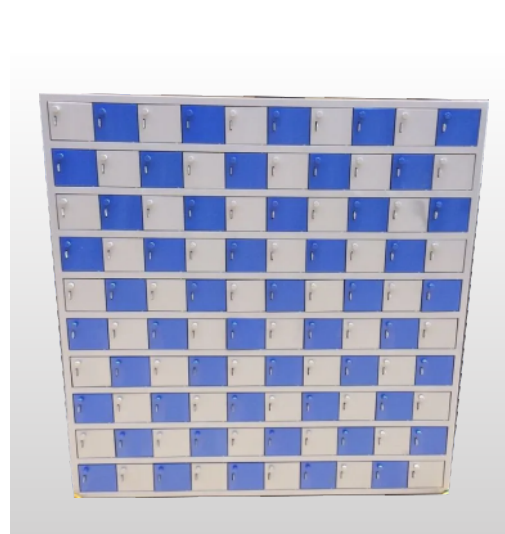
**LOCKER CABINET**



**LOCKER CABINET WITH INSIDE SHELF**



**MOBILE LOCKER**



**100 COMPARTMENT MOBILE LOCKER**



**27 LOCKER CABINET**



**16 LOCKER WITH INSIDE SHELF**



# DIE PUNCH CABINET



## SS 304/316 Material Of Construction

Made in 18/16 Gauge die & punch cabinets facilitates the easy, systematic and safe storage of a large number of dies and punches. Keeping an accurate inventory of tooling has been simplified of die & punch cabinets.

**Durability** Stainless steel does not dent, crack, break, or pit easily.

This prevents from dirt and bacteria forming on our equipment.

It can withstand abrasive materials & chemicals. **Longevity** Because of its resistance to corrosion and rust, stainless steel equipment is known for its long-lasting functionality.

Finish in Matt/Mirror Polish.

# SS DIE PUNCH CABINET



**VERTICAL 14 DRAWER DIE PUNCH CABINET**



**HORIZONTAL DIE PUNCH CABINET**



**5 DRAWER DIE PUNCH CABINET**



**21 DRAWER DIE PUNCH CABINET**



**36 DRAWER DIE PUNCH CABINET**

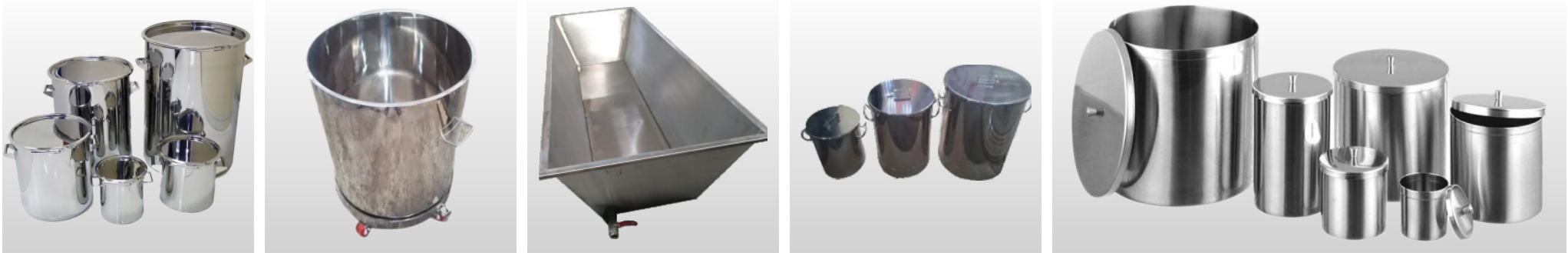
## BINS



## CHAIR & STOOL

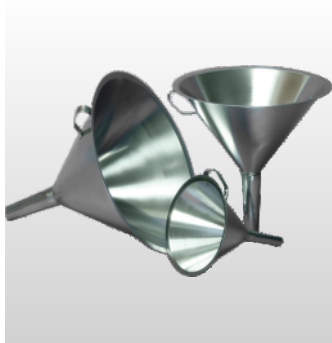


## CONTAINER





# ACCESSORIES



**FUNNEL**



**BUCKET**



**SPOON**



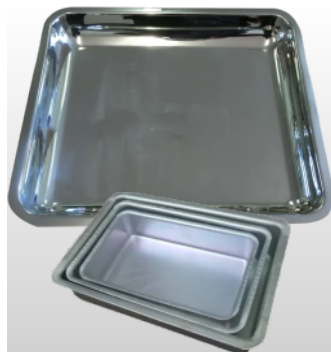
**TOOL BOX**



**STOOL**



**SCOOP**



**TRAY**



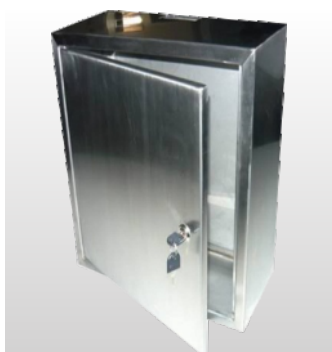
**MIRROR**



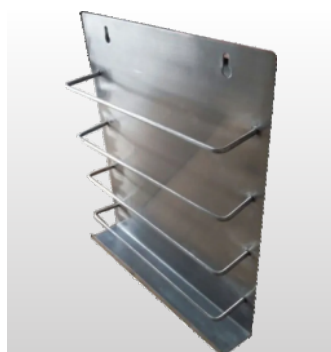
**TABLET COUNTER**



**OIL CAN**



**KEY BOX**



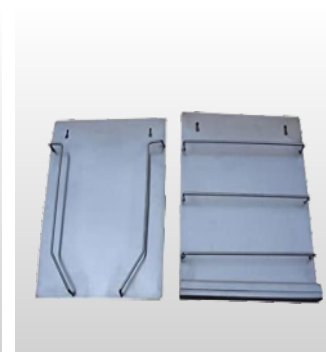
**SOP STAND**



**FIRE EXTINGUISHER STAND**



**BEAKER**



**STAND**

**SS 304/316 Material Of Construction**

**Made in 18/16 Gauge**

The Material Suitable in Pharmaceuticals, R&D lab, Quality Control, Food Industries, Chemical Industries, Hospitals.

Products are available Standard size & customised make As per client requirements.

Durability Stainless steel does not dent, crack, break, or pit easily.

This prevents from dirt and bacteria forming on our equipment.

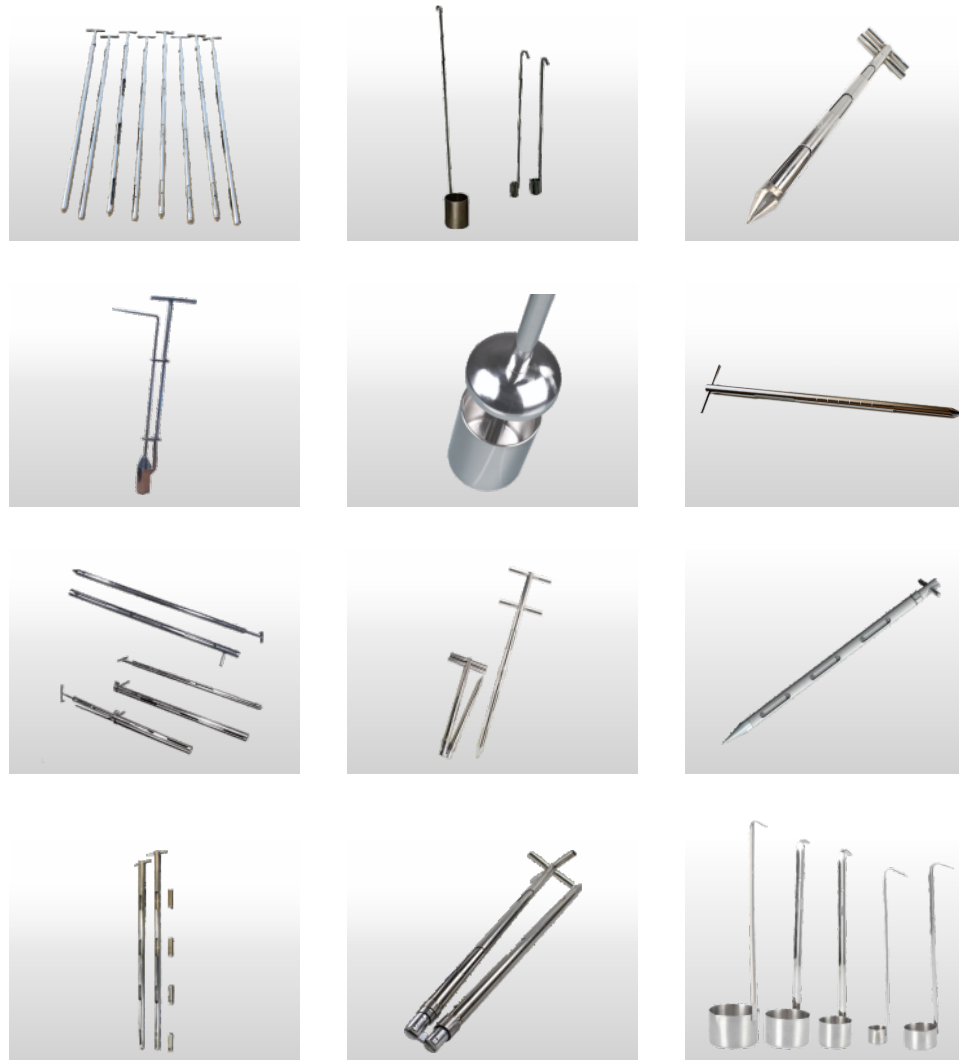
It can withstand abrasive materials & chemicals.

Longevity Because of its resistance to corrosion and rust, stainless steel equipment is known for its long-lasting functionality.

Finish in Matt/Mirror Polish.



# SS SAMPLER



SS 304/316 Material Of Construction

Made in 18/16 Gauge

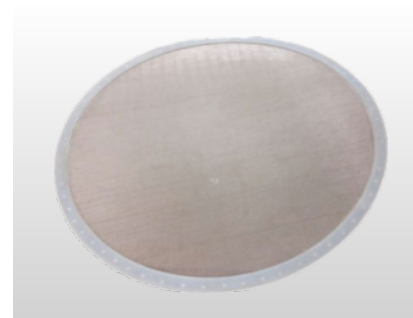
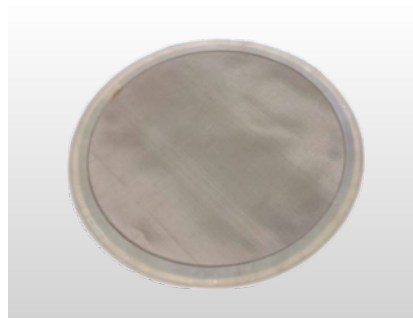
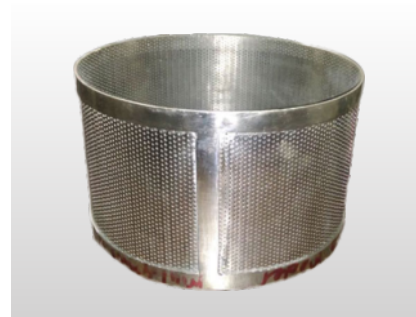
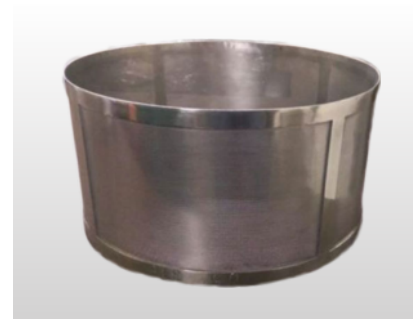
Stainless steel liquid sampler issued to take objective point samples, cross sectional and all-layer samples of viscous substances, liquids, and powders. Stainless steel liquid sampler as a sampling device is perfect for acidic environs and for difficult to grasp places and is suitable for any hygienic application.

**Durability** Stainless steel does not dent, crack, break, or pit easily.

This prevents from dirt and bacteria forming on our equipment.

It can withstand abrasive materials & chemicals. **Longevity** Because of its resistance to corrosion and rust, stainless steel equipment is known for its long-lasting functionality.

Finish : Matt/ Mirror Polish.



SS 304/316 Material Of Construction

Made in 18/16 Gauge

A sieve, fine mesh strainer, or sift, is a device for separating wanted elements from unwanted material or for controlling the particle size distribution of a sample, using a screen such as a woven mesh or net or perforated sheet material. The word sift derives from sieve.

Durability Stainless steel does not dent, crack, break, or pit easily.

This prevents from dirt and bacteria forming on our equipment.

It can withstand abrasive materials & chemicals. Longevity Because of its resistance to corrosion and rust, stainless steel equipment is known for its long-lasting functionality.

Finish : Matt/ Mirror Polish.

# SS TABLES



**COMPUTER TABLE**



**FRAME TABLE**



**CANTEEN TABLE**



**INSPECTION TABLE**



**WRITING TABLE**



**OPEN TYPE SINK TABLE**



**DOUBLE TYPE SINK TABLE**



**CLOSED TYPE SINK TABLE**



# SS TROLLEY



CAGE TROLLEY



TRAY TROLLEY



DIE PUNCH TROLLEY



MONITOR TROLLEY



DRYER TROLLEY



MULTIPURPOSE TROLLEY



WEIGHT BOX TROLLEY



MOPPING TROLLEY



CONTAINER TROLLEY



PALLET TROLLEY



PLATFORM TROLLEY



MS PALLET TROLLEY



DRUM TROLLEY



# SS LADDER



**SS 304/316 Material Of Construction**

**Made in 18/16 Gauge**

It is made using pure stainless steel material that prevents moisture throughout the term life.

The unit is hard enough to be used for a long time. It is highly used in pharmaceuticals.

Warehouse, Production area. It has a smooth shiny metallic structure and appearance.

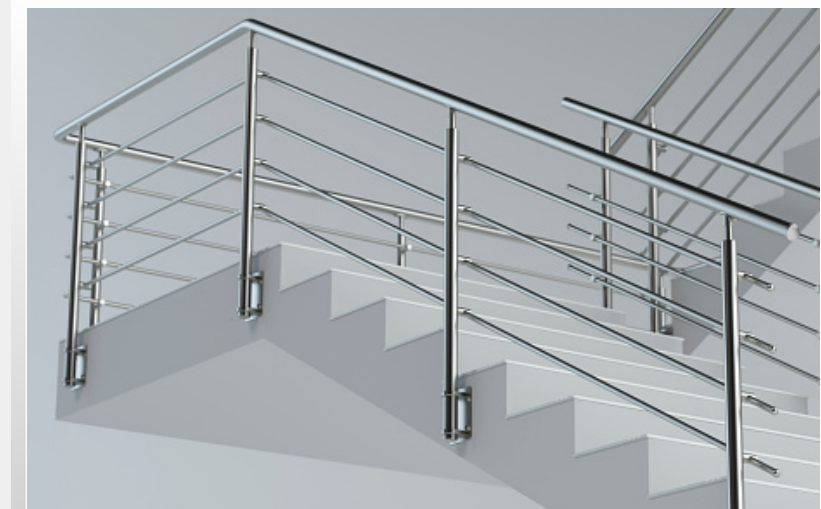
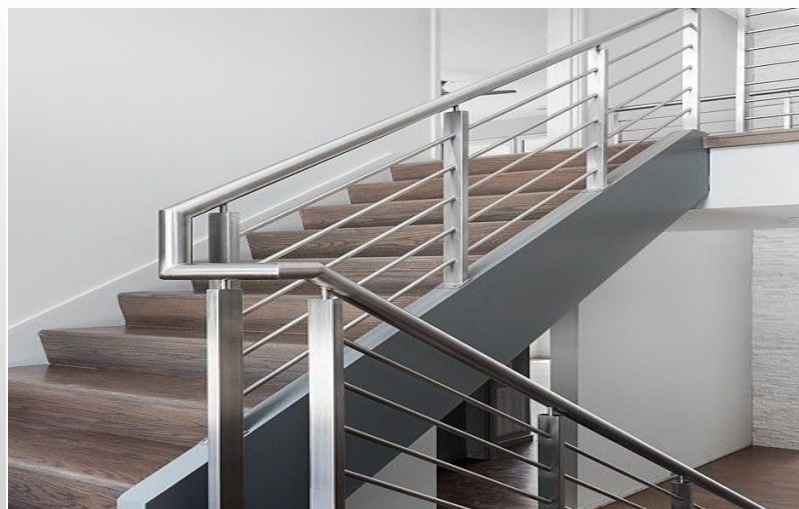
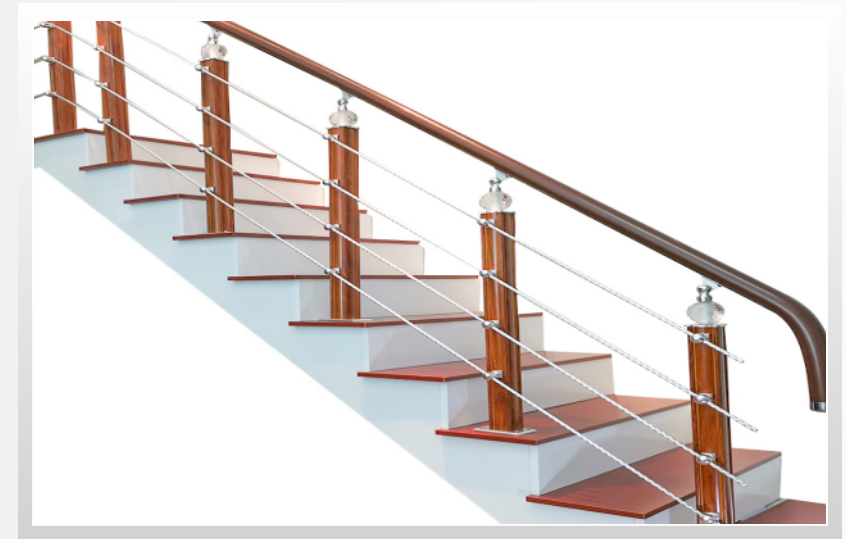
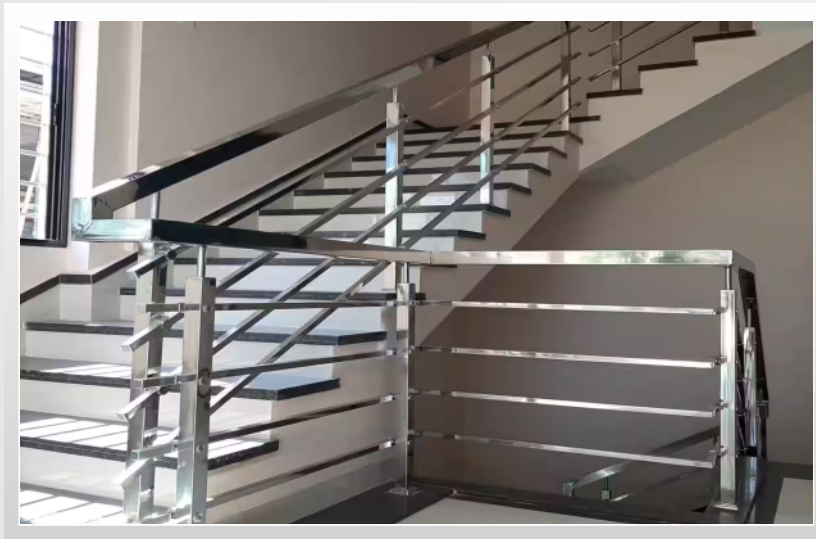
**Durability** Stainless steel does not dent, crack, break, or pit easily.

This prevents from dirt and bacteria forming on our equipment.

It can withstand abrasive materials & chemicals. Longevity Because of its resistance to corrosion and rust, stainless steel equipment is known for its long-lasting functionality.

**Finish : Matt/ Mirror Polish.**

# SS RAILING



# PASS BOX



SS 304/316 Material Of Construction

Made in 18/16 Gauge

Pass box is one of the cleanroom systems, which is used to transfer materials from one side to other side through controlled environment in order to avoid airborne cross contamination.

Two Stage Filtration

Available in SS 304 / SS 316 or a combination of both.

EU6 - Prefilter (95% down to 5 micron)

EU14 - HEPA Filter - Supply (99.999% down to 0.3 micron)

Dynamically balanced Motor-blower facilitated with suspension arrangement to minimize the noise level.

Dynamic Pass Box work like an air lock or laminar air flow unit.

Durability Stainless steel does not dent, crack, break, or pit easily.

This prevents from dirt and bacteria forming on our equipment.

It can withstand abrasive materials & chemicals. Longevity Because of its resistance to corrosion and rust, stainless steel equipment is known for its long-lasting functionality.

Finish : Matt/ Mirror Polish



# PACKING CONVEYOR BELT



SS 304/316 Material Of Construction

Made in 18/16 Gauge

The Material Suitable in Cartoon & Manual Pass box Conveyor Pass Between Production to packing area

Products are customised make As per client requirements material Accessories 0.5Hp motors to 1 hp motors depending on the length.

High quality of gear box & motor with control panels.

Finish in Matt/Mirror Polish.



# LABORATORIES FURNITURE SETUP



Material Of Construction GI/MS

Made in 18/16 Gauge

A Laboratory Module is a substitute for a Subject Module in Adaptable to any colour scheme or decor, mild steel casework is a popular choice Microbiology Lab, biological, biomedical, pharmaceutical, and hospital labs.

This work surface provides excellent chemical and heat resistance and is easily cleaned.

The most common lab furniture categories include laboratory benches, forensic cabinets, apparel dispensers, carts, chemical cabinets, drawers and general cabinets.

Durability Mild Steel does not dent, crack, break, or pit easily.

This prevents from dirt and bacteria forming on our equipment.

It can withstand abrasive materials & chemicals. Longevity Because of its resistance to corrosion and rust, mild steel equipment is known for its long-lasting functionality.

Finish in Powder Coated.



**“C” TYPE LAB FURNITURE**



**PEDESTAL TYPE LAB FURNITURE**



**PLINTH TYPE LAB FURNITURE**



# SS LABORATORIES FURNITURE



# MS LABORATORIES FURNITURE SETUP



**CHEMICAL STORAGE CABINET**



**PP MODULES 2 SHUTTER**



**ANTI VIBRATIONS TABLE**





**SS 304/316 Material Of Construction**  
**Made in 18/16Gauge**

It is made using premium grade stainless steel which helps in offering great resistance to corrosion and wear tear thereby enabling a smooth texture and finish.

**Durability** Stainless steel does not dent, crack, break, or pit easily.

This prevents from dirt and bacteria forming on our equipment.

It can withstand abrasive materials & chemicals. Longevity Because of its resistance to corrosion and rust, stainless steel equipment is known for its long-lasting functionality.

**Finish :** Matt/ Mirror Polish.

# BLOOD EQUIPMENTS - ANCILLARIES



**BLOOD DONOR COUCH**



**DIALYSIS CHAIR**



**BLOOD BANK REFRIGERATOR**



**BLOOD BANK MONITOR**



**3 WAY FAUCET**



**SPOT EXTRACTOR**



**SAFETY SHOWER**



**PAG BOARD**



SN 94/3, Umar Compound Pelhar, Nallasopara (E),  
Dist. Palghar - 401208, Maharashtra, INDIA.

**Contact Person :** Sonarika Naidu

**Contact Number :** 96657 86225



+91 96657 86225, +91 86670 87376



sales@sonarikaequipments.com, project@sonarikaequipments.com  
exports@sonarikaequipments.com, purchase@sonarikaequipments.com



www.sonarikaequipments.com